



INSTALLATION AND OWNER'S MANUAL

Z2442 Mid Size Windscreen, Light Tint

Z2443 Sport Windscreen, Dark Tint

Z2444 Tall, Clear Windscreen for R1200R

Attention



Special notes and cautionary measures which can prevent damage to the accessory or motorcycle.

Note:

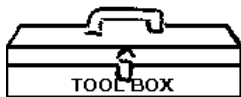
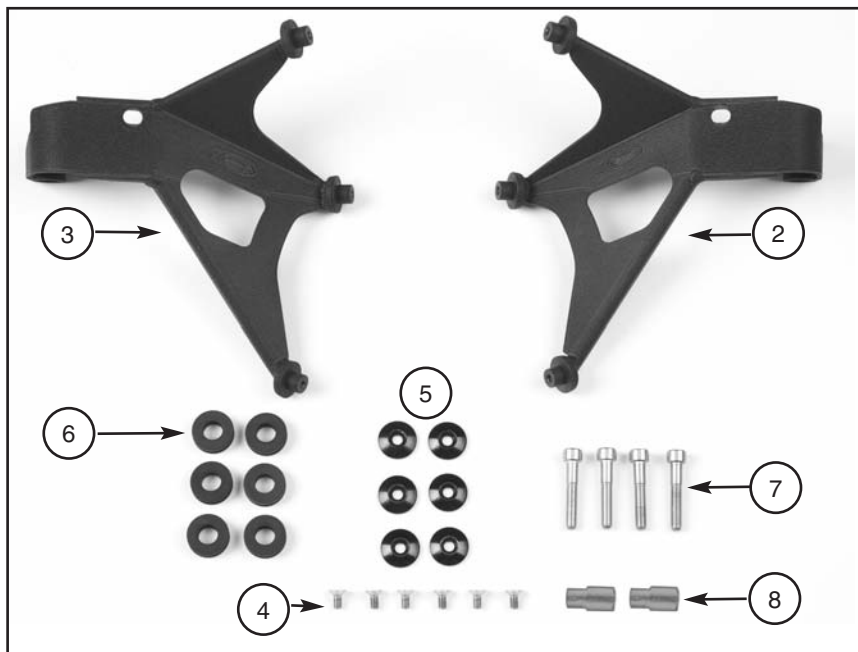


Tips for facilitation of operation, control and adjustment, as well as maintenance work.

Check contents of this package against parts list. Report any missing parts to your dealer or ZTechnik directly. The following information is necessary: Bag Number and Date Stamp(s) on outside of Kit or Box and Place of Purchase.

Z2442, Z2443 and Z2444 Parts List

Index	Part Number	Description	Qty.	Notes
1		Windshield, Hardcoated Lexan® polycarbonate	1	Not Pictured
2	37-370240-000	Bracket, Left	1	
3	37-370241-000	Bracket, Right	1	
Bag#1067				
4	51-514212-000	Hex Screw, M6 x 12 Stainless Steel	6	
5	34-346037-000	Cap, Black	6	
6	44-447304-000	Grommet	6	
7	51-515748-000	Hex Screw M8 x 1.25 x 45 Stainless Steel	4	
8	49-495256-000	Standoff	2	



TOOLS REQUIRED:

Torx Wrench, T30 (Turn Signal Removal)


Torx Wrench, T40

Allen Wrench, 6mm

Allen Wrench, 4mm



PREPARATION

 Right and left side of motorcycle is determined while sitting on the bike.

Position the motorcycle securely on its stand.
Cover the front fender while you work.

R12R MODELS WITH SMALL TURN SIGNALS

There is no need to remove turn signals. Turn signal housing will fit through bracket.

GO TO PAGE 3. FIGURE 1

R12R MODELS WITH LARGE TURN SIGNALS, FIGURE 2

1. Remove headlight shroud. **Figure 3**

2. Disconnect Turnsignals. **Figure 4**

3. Remove turnsignal. (**T30 Torx Wrench**) **Figure 5**



Figure 1, Small Turn Signals



Figure 2, Large Turn Signals



Figure 3




Figure 4



Figure 5

INSTALLATION

 Remove and install the brackets to motorcycle one side at a time.

1. MOUNT POINT-A

Remove the Left side screw only, from the head light bracket located on the underside of the upper triple tree clamp. (T40 Torx Wrench) Figure 6.

Retain the OEM compression spacer. It will be re-used.

Screw will not be re-used

2. MOUNT POINT- B

Remove the Left side screw and compression spacer from the headlight bracket located on the outside of the upper triple tree clamp. **Screw and Compression Spacer will not be reused.** (T40 Torx Wrench) Figure 7.

3. INSTALL BRACKET

MOUNT POINT- A

Secure mount point A using original OEM Compression spacer and a 45mm Screw (7). (6mm Allen Wrench) Figure 8b

MOUNT POINT-B

Secure mount point B using supplied Standoff (8) and a 45mm Screw (7) (6mm Allen Wrench) Figure 8a and 8c

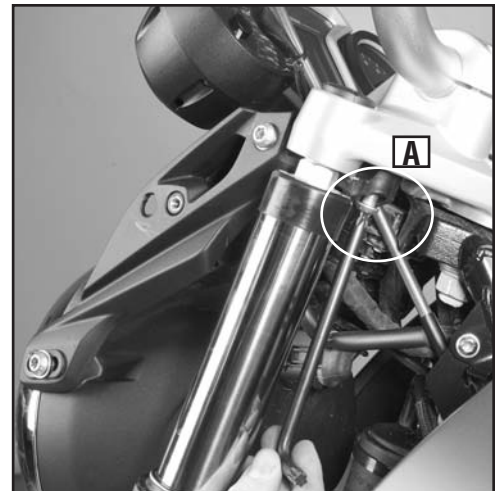


Figure 6

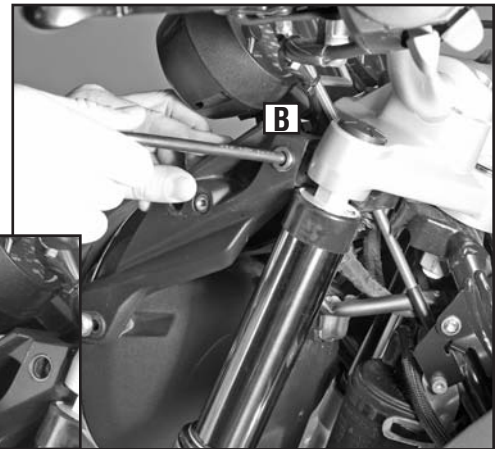


Figure 7

4. Tighten all fasteners securely. (6mm Allen Wrench)

5. Follow the same procedure for the Right side of motorcycle.

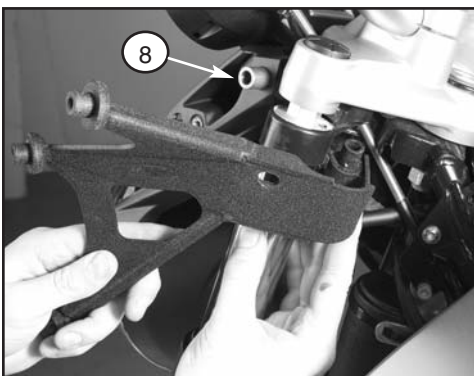


Figure 8a

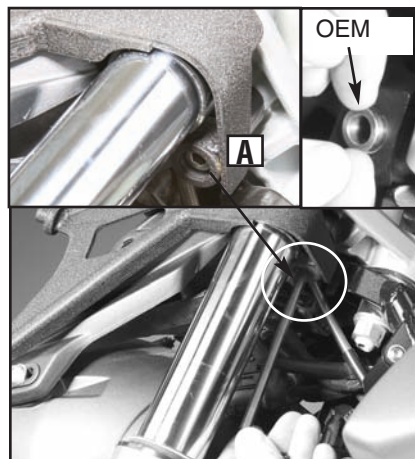


Figure 8b



Figure 8c

 **R12R MODELS WITH LARGE TURN SIGNALS**

Route turn signal through bracket and re-install turn signal. Check operation of turn signals. (T30 Torx Wrench) **Figure 9**

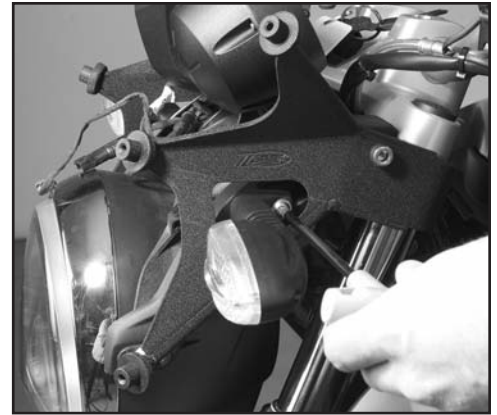


Figure 9, Large Turn Signals

Install shroud. Figure 10



Figure 10, Large Turn Signals

6. INSTALL WINDSHIELD

Insert grommets (6) into windshield. **Figure 11**

Flex shield, to align holes with the mount points.
Figure 12

Install aluminum caps (5) using the M6 Screws (4)
(6mm Allen Wrench) Figure 13

Tighten securely. **(4mm Allen Wrench)**



Figure 11

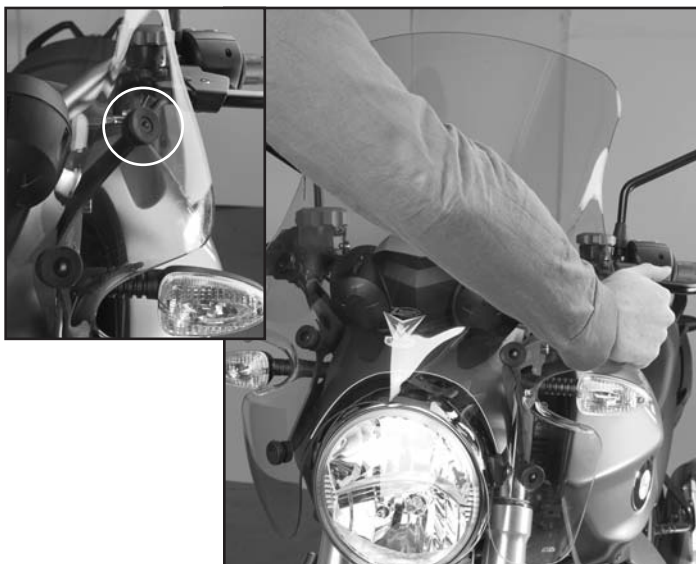


Figure 12



Figure 13

MAINTENANCE

To clean the screen, wash with a clean soft cloth, plenty of warm water and if necessary, a non-abrasive soap such as dishwashing liquid. Flannel or soft chamois make good cleaning cloths. **Paint, glue residue or grease removal:** Moisten cotton with Naphtha or Turpentine followed by a wash as above. National Cycle Shield Wash™ makes a good daily cleaner and comes with a handy travel size bottle. N1401 Shield Wash is safe for helmet visors.

Do not clean polycarbonate in hot sun or high temperatures. Do not clean the screen with glass cleaners. Do not use rain protective products on the screen other than National Cycle brand Rain Zip®, Part No. N1410-01. Do not allow brake fluid, alcohol, or strong solvents to contact the screen.



Small Turn Signals

Large Turn Signals



WARNING

Fahren Sie Ihr Motorrad niemals mit losen Zubehörteilen. Überprüfen Sie die Halterungen regelmäßig auf festen Sitz.

Die heutigen Motorräder sind mit einer ausreichenden Rahmensteifigkeit gebaut, um den moderaten Belastungen standzuhalten, die durch die absehbare Hinzufügung eines oder mehrerer Zubehörteile auf sie ausgeübt werden. Wenn ein oder mehrere Zubehörteile die Stabilität Ihres Motorrads beeinträchtigen, entfernen Sie sofort das / die Zubehörteil (e). Nehmen Sie kein Motorrad in Betrieb, das unsichere Fahreigenschaften aufweist.

Lassen Sie das Problem von erfahrenem Servicepersonal beheben, bevor Sie mit installiertem Zubehör fahren. Bei weiteren Fragen zu Handhabungsproblemen im Zusammenhang mit einem oder mehreren Zubehörteilen wenden Sie sich bitte an Ihren Händler, Motorradhersteller oder Zubehörhersteller.

Sonnenlicht, das von der inneren Krümmung der Windschutzscheibe reflektiert wird, kann zu bestimmten Tageszeiten zu einem extremen Wärmestau auf den Instrumenten des Motorrads führen und diese möglicherweise sogar zum Schmelzen bringen. Gehen Sie beim Parken vorsichtig vor, um dies zu vermeiden. Stellen Sie Ihr Motorrad in Richtung Sonne ab oder platzieren Sie einen undurchsichtigen Gegenstand über diesem Bereich.